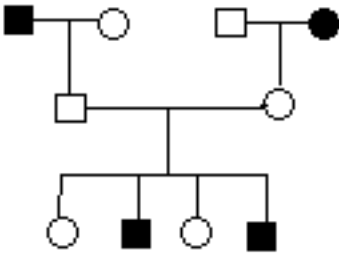


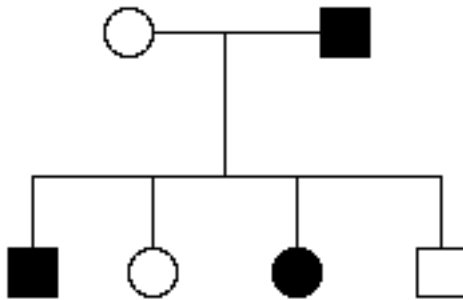
## PRACTICE PROBLEMS 2

1. In the pedigree below:

- (a) Fill in the genotypes. Assume a single gene with two alleles and complete penetrance.
- (b) What is the probability that individual III 1 is homozygous recessive? Heterozygous? Homozygous dominant?



2. Consider the following pedigree.



Could the trait shown be caused by

- (a) an autosomal (non-sex-linked) recessive allele?
- (b) an autosomal dominant allele?
- (c) a sex-linked recessive allele?
- (d) a sex-linked dominant allele?